



## Turnors, Harlow, CM20 1EF

Geoffrey Matthew Estates are delighted to offer this larger than average, one bedroom, first floor apartment with newly EXTENDED LEASE in the popular residential area of Turnors, Harlow. Benefitting from two allocated parking bays. The apartment is ideally located for access to the town centre and for Princess Alexandra Hospital. This property would be ideally suited for a first time buyer or investor.

Early viewings are highly recommended!

Offers In The Region Of £200,000

## Turnors, Harlow, CM20 1EF



- One Bedroom
- Close To Town
- EXTENDED LEASE!
- First Floor
- Close To Hospital
- Two Allocated Parking Bays
- Close To Transport Links

### Hallway

### Lounge

10'7 x 20'4 (3.23m x 6.20m)

### Kitchen

6'1 x 16'3 (1.85m x 4.95m)

### Bedroom

10'3 x 15'10 (3.12m x 4.83m)

### Bathroom

6'1 x 8'11 (1.85m x 2.72m)

### Agents Notes

We are advised of the following;

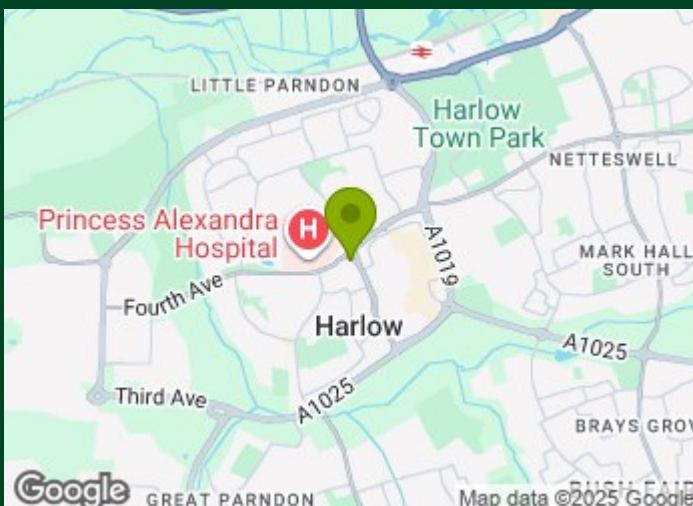
Current Lease term now circa 160 years

Monthly service charge £212.66

Peppercorn Ground Rent

Sink fund balance - £46,628

Management Company - L & Q  
(London and quadrant)

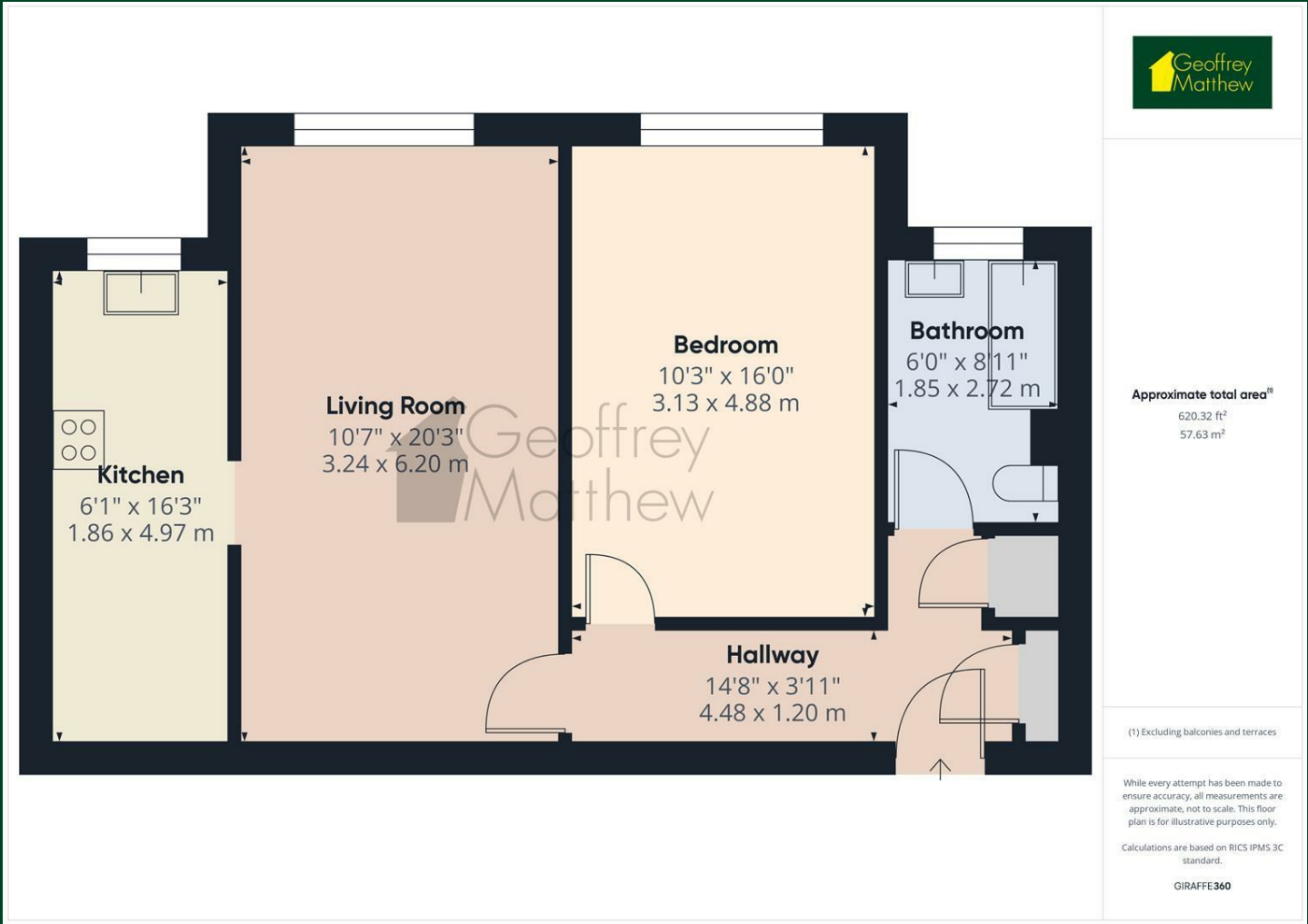


### Directions





Floor Plan



Council Tax Details

Harlow Band B

These particulars, whilst believed to be accurate are set out as a general outline only for guidance and do not constitute any part of an offer or contract. Intending purchasers should not rely on them as statements of representation of fact, but must satisfy themselves by inspection or otherwise as to their accuracy. No person in this firms employment has the authority to make or give any representation or warranty in respect of the property.

